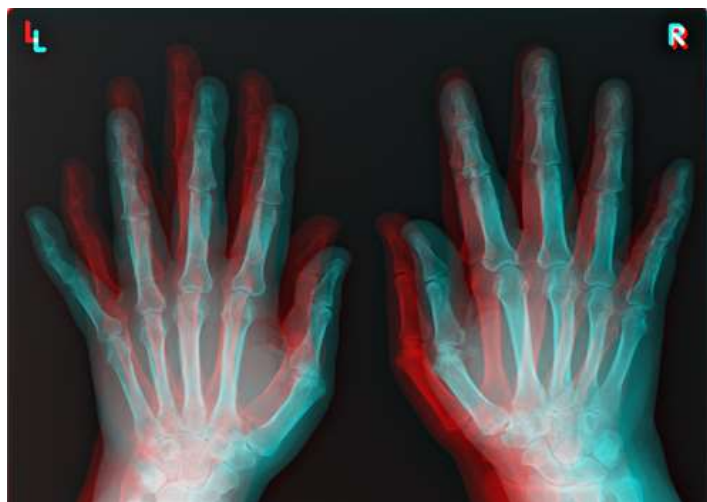


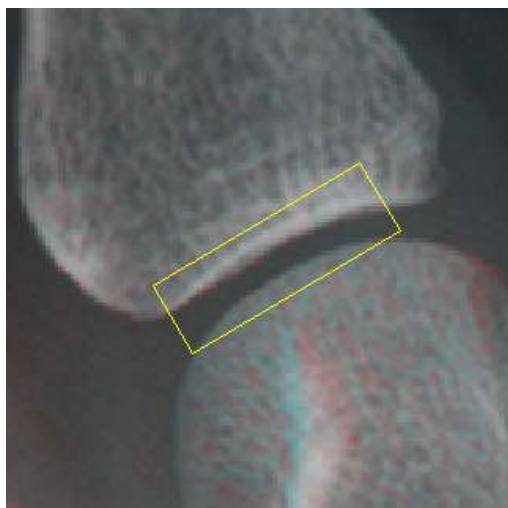
## A reliability study using computer-based analysis of finger joint space narrowing in rheumatoid arthritis patients



Radiograph is the most common modality to assess the degree of the RA progression in daily practice.

We developed a computerized method which can detect objectively joint space narrowing progression.

This method has high reproducibility and does not need special training to assess joint space narrowing with inter-observer ICC of almost 1.



Katsuya HATANO