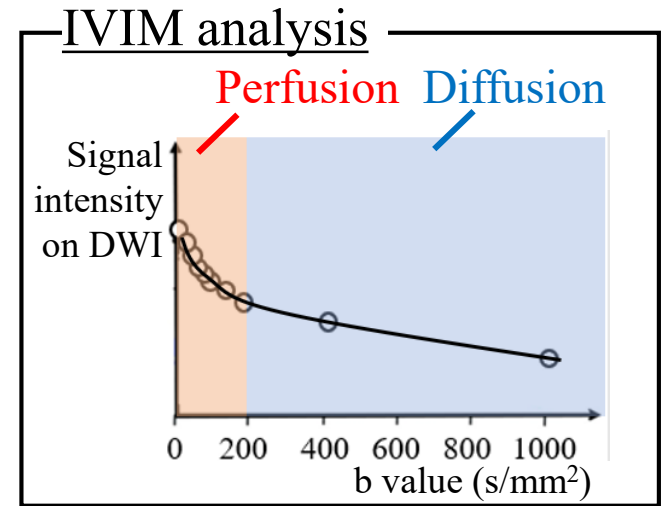
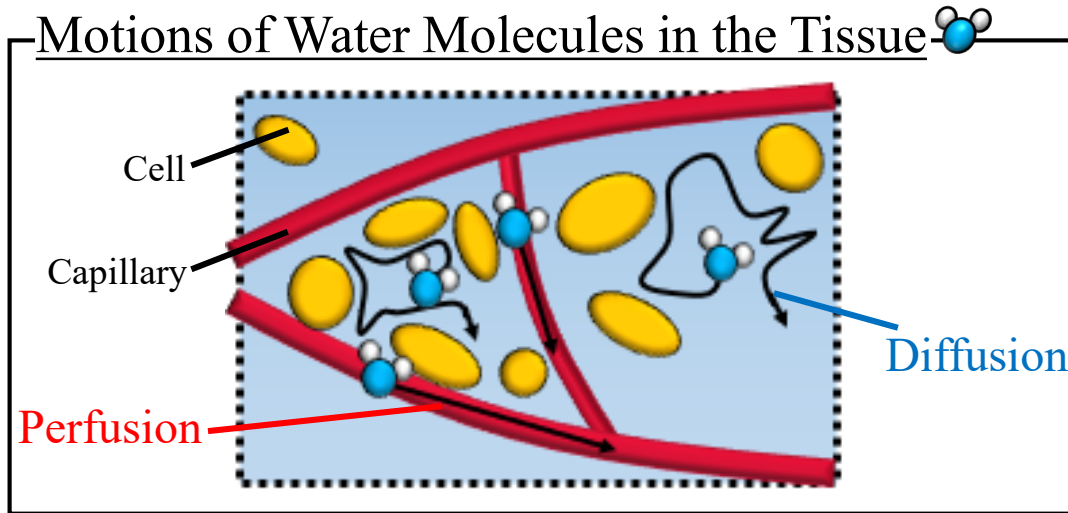


Intravoxel Incoherent Motion MRI for Discrimination of Synovial Proliferation in the Hand Arthritis



Intravoxel incoherent motion (IVIM) analysis can quantify perfusion and diffusion information in the lesions by using diffusion weighted images (DWI) without a contrast agent.

We found that diffusion, not perfusion, information using DWI reflected synovial proliferation in hand arthritis.



Motoshi FUJIMORI