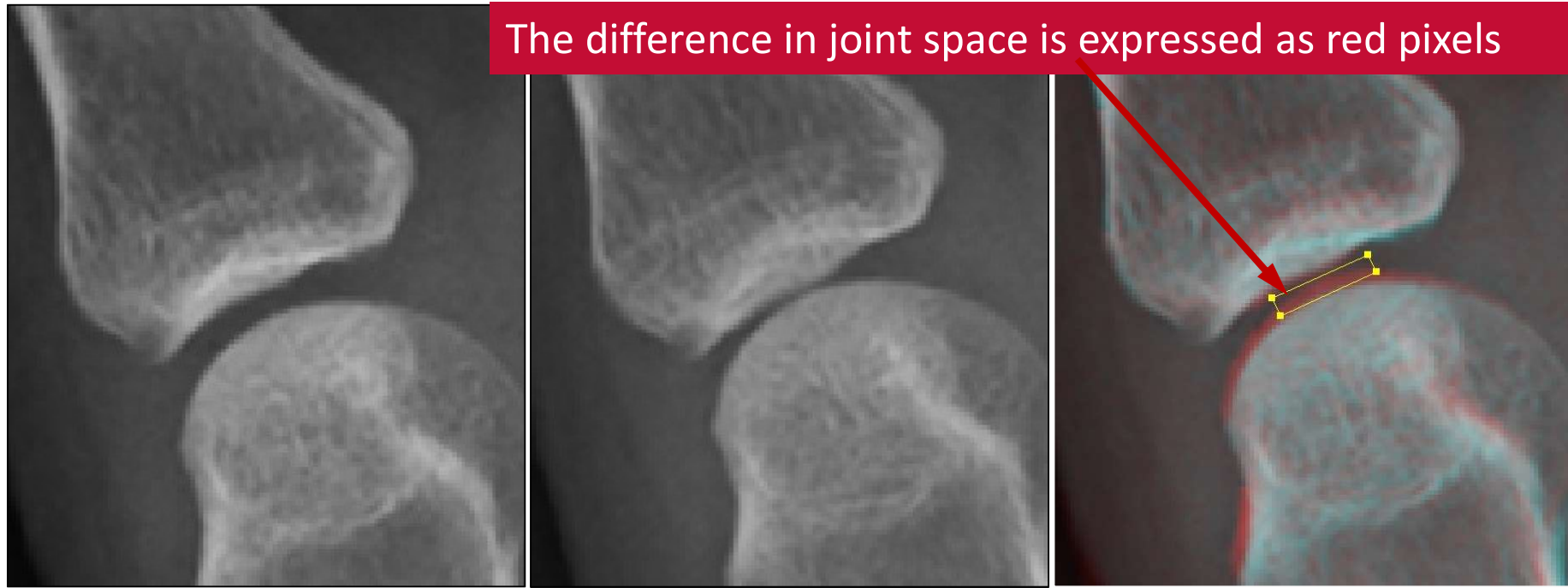


# ASSESSMENT OF RADIOGRAPHIC JOINT SPACE NARROWING IN RHEUMATOID ARTHRITIS USING AN ORIGINAL SOFTWARE



Baseline image

Follow-up image

Fused image

The original software can objectively and quantitatively detect finger joint space narrowing progression on radiographs.



Taichi OKINO, RT