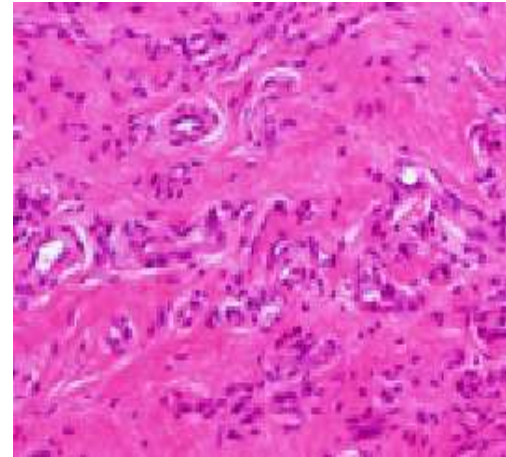
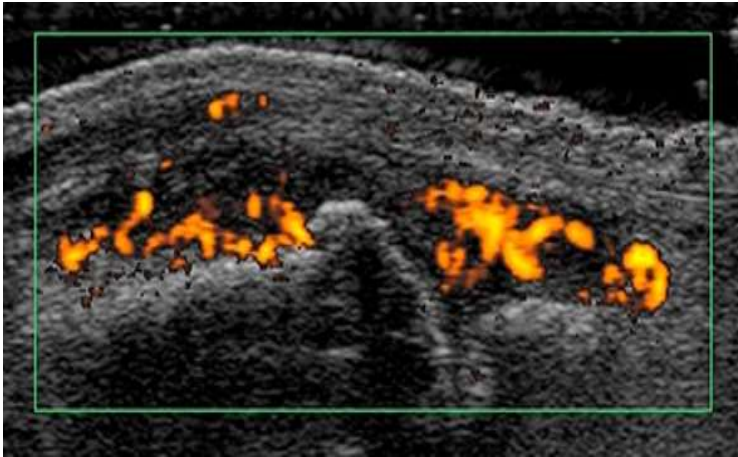


# RELATIONSHIP BETWEEN POWER DOPPLER GRADE AND THE PATHOLOGICAL BLOOD VESSEL FEATURES



In the assessment of rheumatoid arthritis (RA), power Doppler ultrasonography (PDUS) can visualize synovitis with high sensitivity, capturing the abnormal blood flow generated in the synovial joint.

We elucidated what determines the magnitude of PDUS signal intensity in patients with RA.

We found larger capillary vessel (presumably faster capillary flow) may reflect positive PDUS signal in long standing RA.



Katsumi SAITO