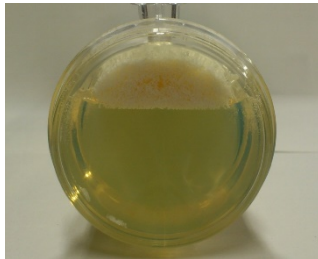


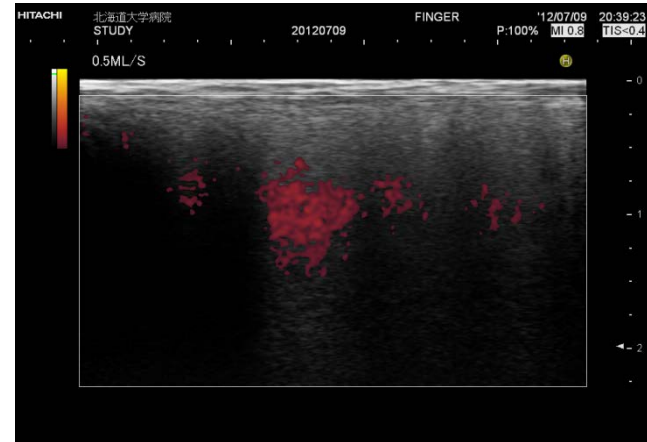
POWER DOPPLER SIGNAL CALIBRATION BETWEEN ULTRASOUND MACHINES USING A CAPILLARY FLOW PHANTOM

Disease activity and treatment response may be estimated by power Doppler ultrasound in rheumatoid patients.

But, it is well known that there are significant machine-to-machine disagreements for signal quantification.



Signal calibration of various models of ultrasound machines is possible using a capillary flow phantom.



Ryosuke SAKANO, RT