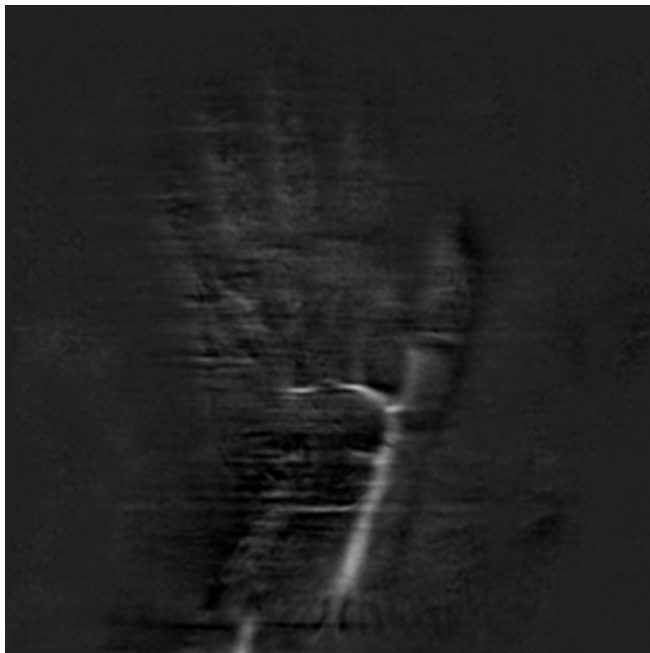


# ADJUSTING ASL METHOD IN WRIST JOINT

We are trying to depict vascular flow in the synovitis of rheumatoid wrist using arterial spin labeling (ASL) method which is a noninvasive magnetic resonance (MR) technique for perfusion measurement.

At the present stage, we are adjusting the imaging parameter of ASL method in the wrist joint.



Taro SAKASHITA