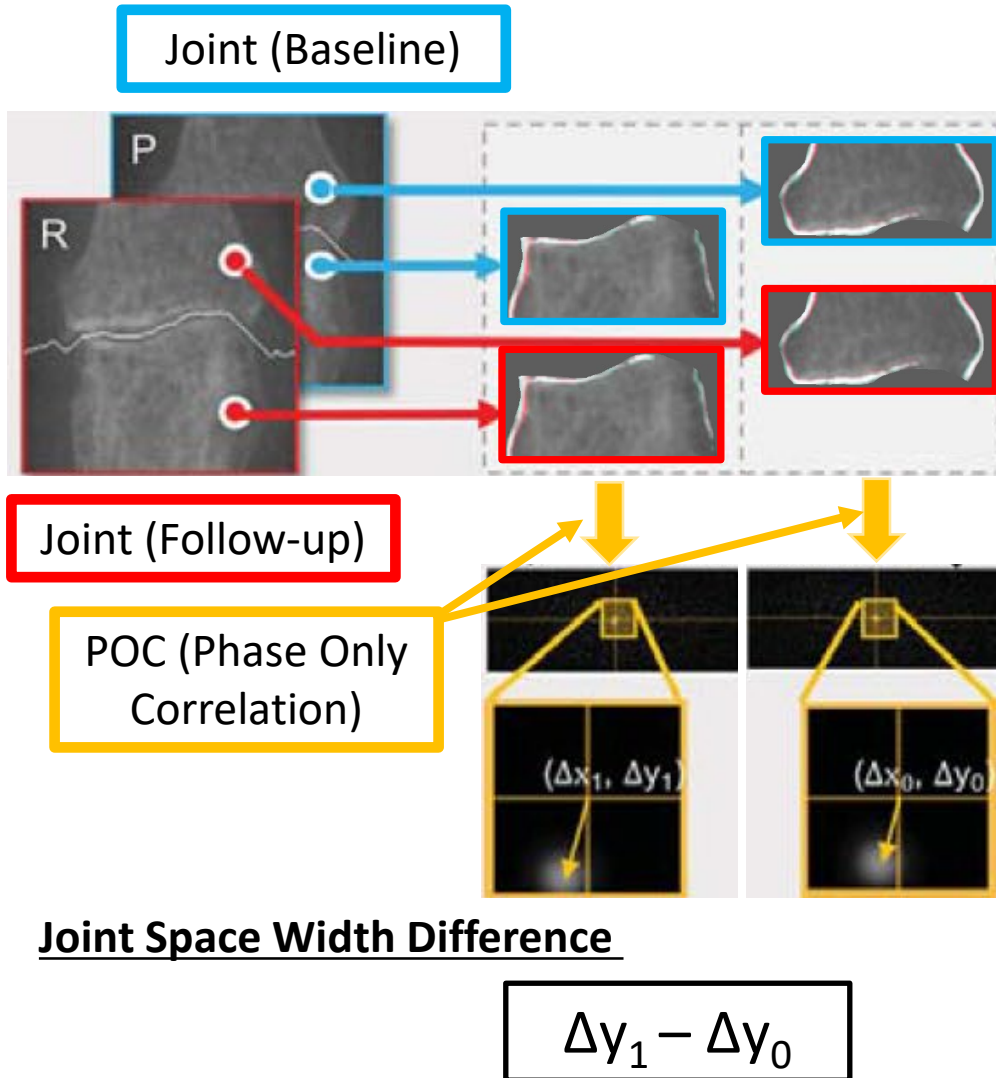


Quantification of Joint Space Width Difference Using POC: A Phantom Study

POC based-system



Radiography

- Software cannot accurately detect changes less than 0.1 mm
- Pixel size; 0.15 mm

Radiography + POC based-system

- POC based-system can accurately detect changes of 0.01 mm
- Sub pixel size; < 0.001mm



Shun SHISHIDO