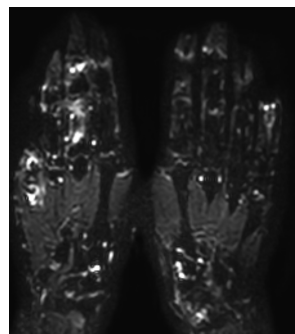
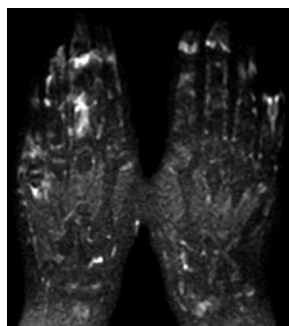


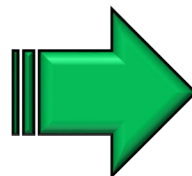
Computed Diffusion-Weighted Imaging for Differentiating Synovial Proliferation from Joint Effusion in Hand Arthritis



DWI
($b = 200 \text{ s/mm}^2$)

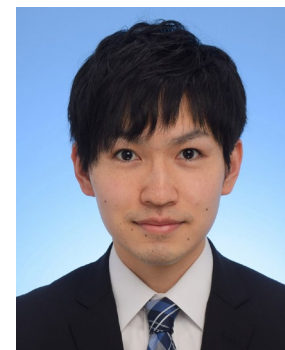


DWI
($b = 1000 \text{ s/mm}^2$)



Computed DWI
($b = 2000 \text{ s/mm}^2$)

- ✓ Computed DWI is synthetic DWI, which is calculated from measured DWI acquired at arbitrarily selected low b-values.
- ✓ We found that computed DWI with b-value of 2000 s/mm^2 based on b-values of 400 and 1000 s/mm^2 had potential as a gold standard for non-invasive assessment to differentiate synovial proliferation from joint effusion.



Yuki TANAKA