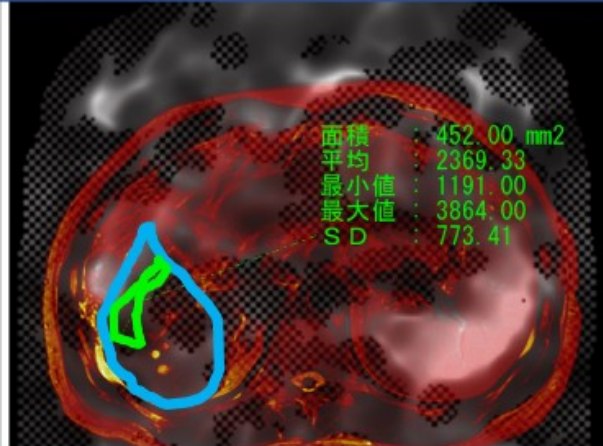
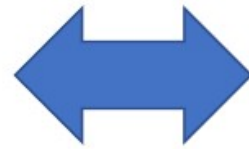


Development of semi-automatic quantitative software of the liver stiffness by MR elastography

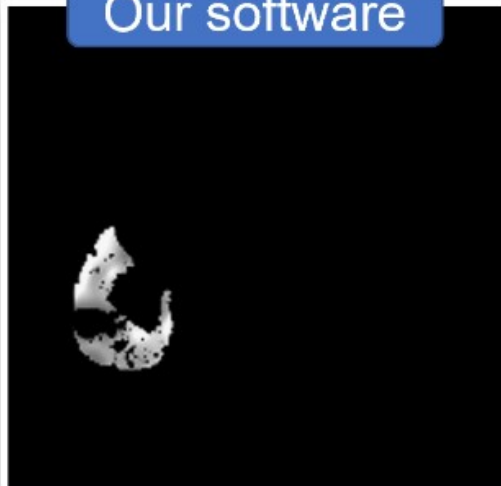
Conventional manual method



Elastic modulus
= 2369 [Pa]



Our software



Elastic modulus
= 3006 [Pa]

- MR elastography (MRE) is a noninvasive MRI- based technique for quantitatively assessing the mechanical properties of tissues in vivo.
- We developed the semi-automatic analysis software. It may be useful for reducing subjectivity in measuring MR elastography of the liver, but there is room for improvement.



Yuri KATSUUMI