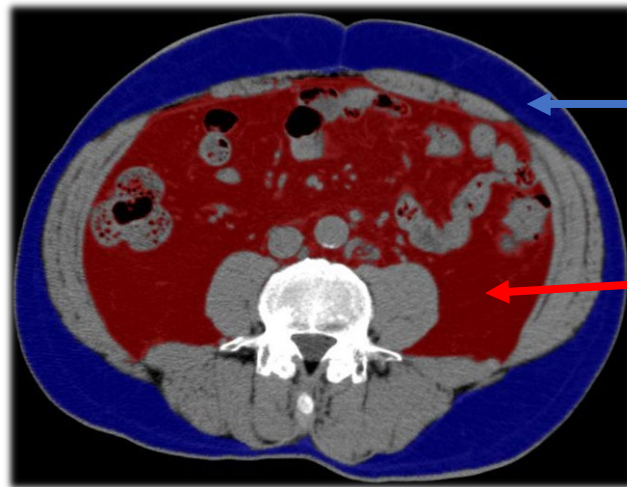


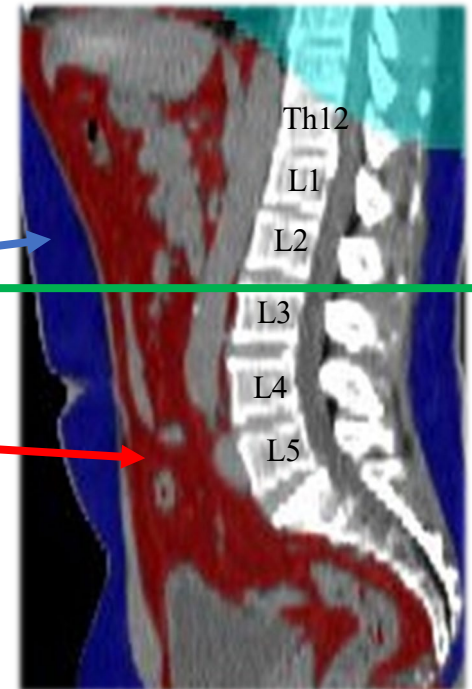
Abdominal Adipose Tissue Measurement using CT

- Abdominal adipose tissue can be classified into VAT and SAT



SAT
Subcutaneous Adipose Tissue

VAT
Visceral Adipose Tissue



- VAT whole volume measurement is complicated and time-consuming
- VAT area measurement at **the CT slice near the upper margin of L3** can best reflect interval changes in VAT whole volume



Yusuke NOUMURA